

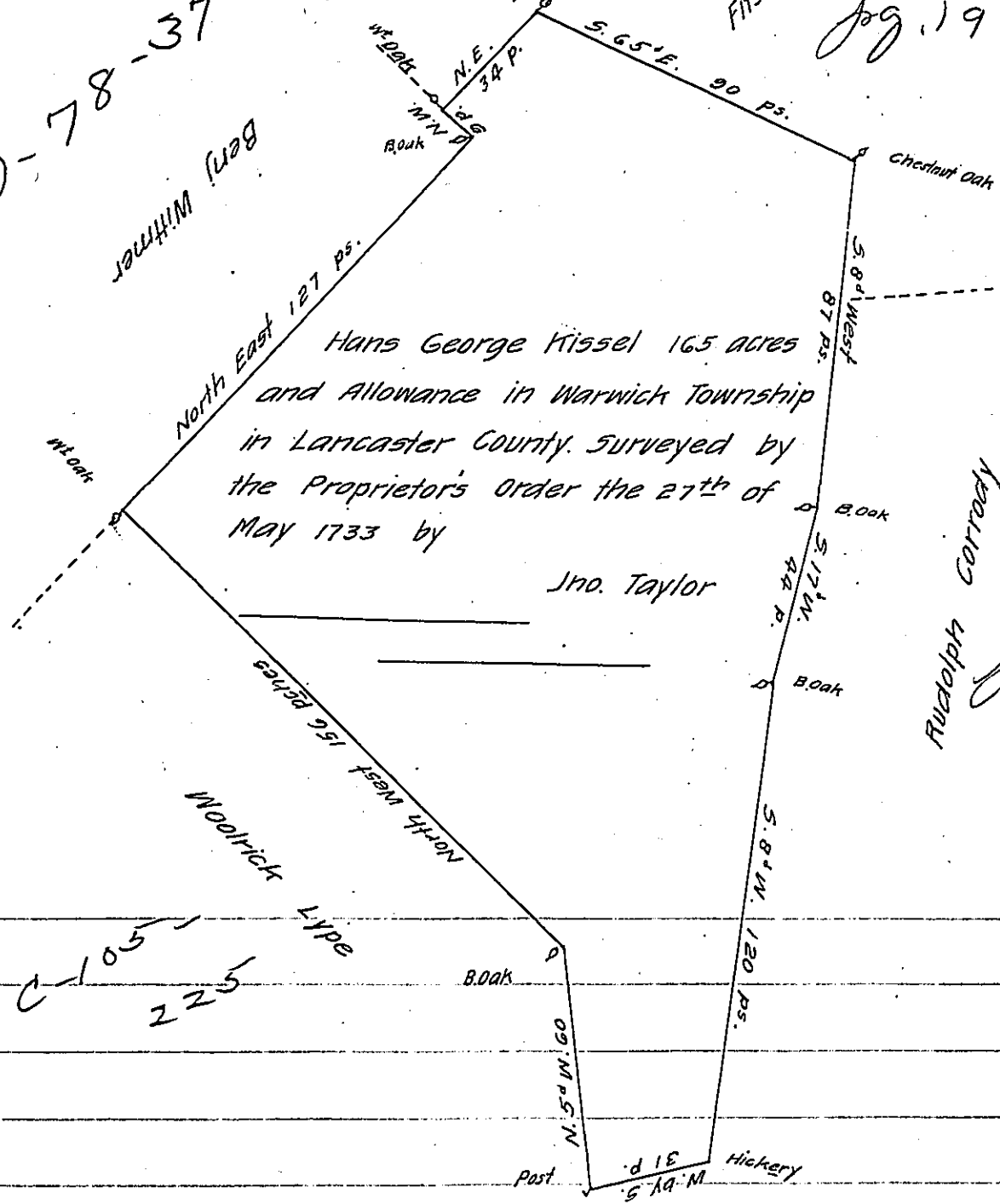
D-78-37

Benj Wittmer

Abraham Burkholder
Cherry oak

Fitzance Stauffer

Fig. 192



Hans George Kissel 165 acres
and Allowance in Warwick Township
in Lancaster County, surveyed by
the Proprietor's Order the 27th of
May 1733 by

Jno. Taylor

Ruraloph Corroady

Fig. 253

C-105
225

IN TESTIMONY that the above is a copy of the original remaining on file in the Department of Internal Affairs of Pennsylvania, made conformably to an Act of Assembly approved the 16th day of February, 1833, I have hereunto set my Hand and caused the Seal of said Department to be affixed at Harrisburg, this sixteenth day of August 1905

Joseph R. Brown
Secretary of Internal Affairs.